

STAKEHOLDER ADVISORY COUNCIL

September 2024

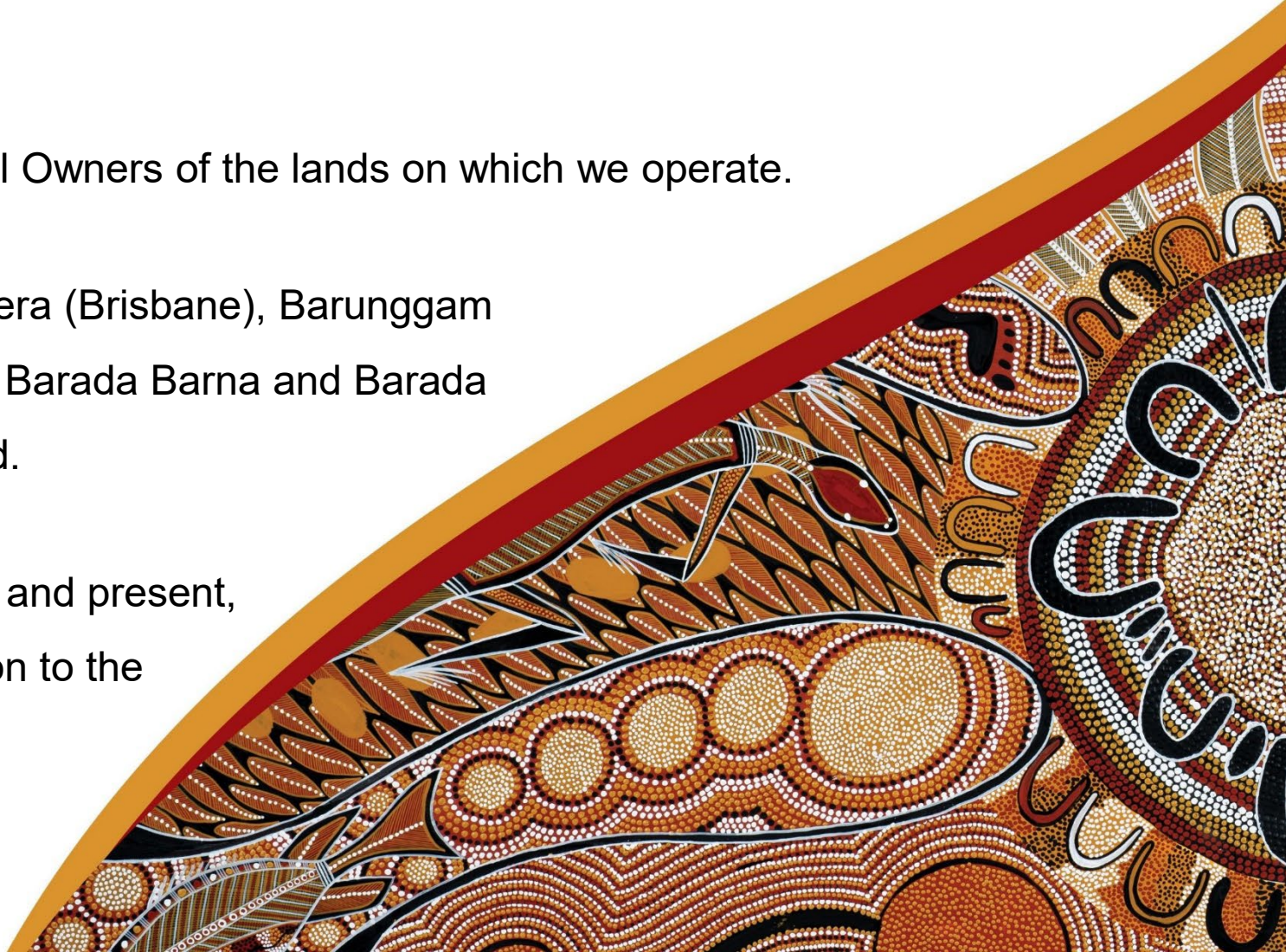


Acknowledgement of Country

CS Energy acknowledges the Traditional Owners of the lands on which we operate.

We live, work, and learn on Turrbal, Jagera (Brisbane), Barunggam (Kogan Creek), Gaangalu (Callide), and Barada Barna and Barada Kabalbara Yetimarala (Lotus Creek) land.

We pay our respects to their elders past and present, and recognise their continuing connection to the land, waters, and community.



Agenda

- **1:00pm** – Arrive, acknowledgement of country and welcome, safety share
- **1.15pm to 1.30pm** – Address any questions from the tour
- **1:30pm to 2:00pm** – Powerlink presentation on REZ
- **2:00pm to 2:25pm** – Banana Shire Council – Mayor update on economic visioning
- **2.25pm to 2.45pm** – Afternoon tea
- **2.45pm to 3:15pm** – Energy Charter Disclosure report feedback
- **3:15pm to 3:45pm** – White space
- **3:45pm to 4:00pm** – Next steps

17 SEPTEMBER 2024

REZ BRIEFING

CS Energy Stakeholder
Advisory Council

Wendy Miller – Customer Strategist
Rebecca Powlett – Community Engagement Strategist
Tara King – REZ Engagement Specialist
Nicole Quinn – REZ Engagement Specialist



Powerlink acknowledges the Traditional Owners and their custodianship of the lands and waters of Queensland and in particular the lands on which we operate.

We pay our respect to their Ancestors, Elders and knowledge holders and recognise their deep history and ongoing connection to Country.



Powerlink's role

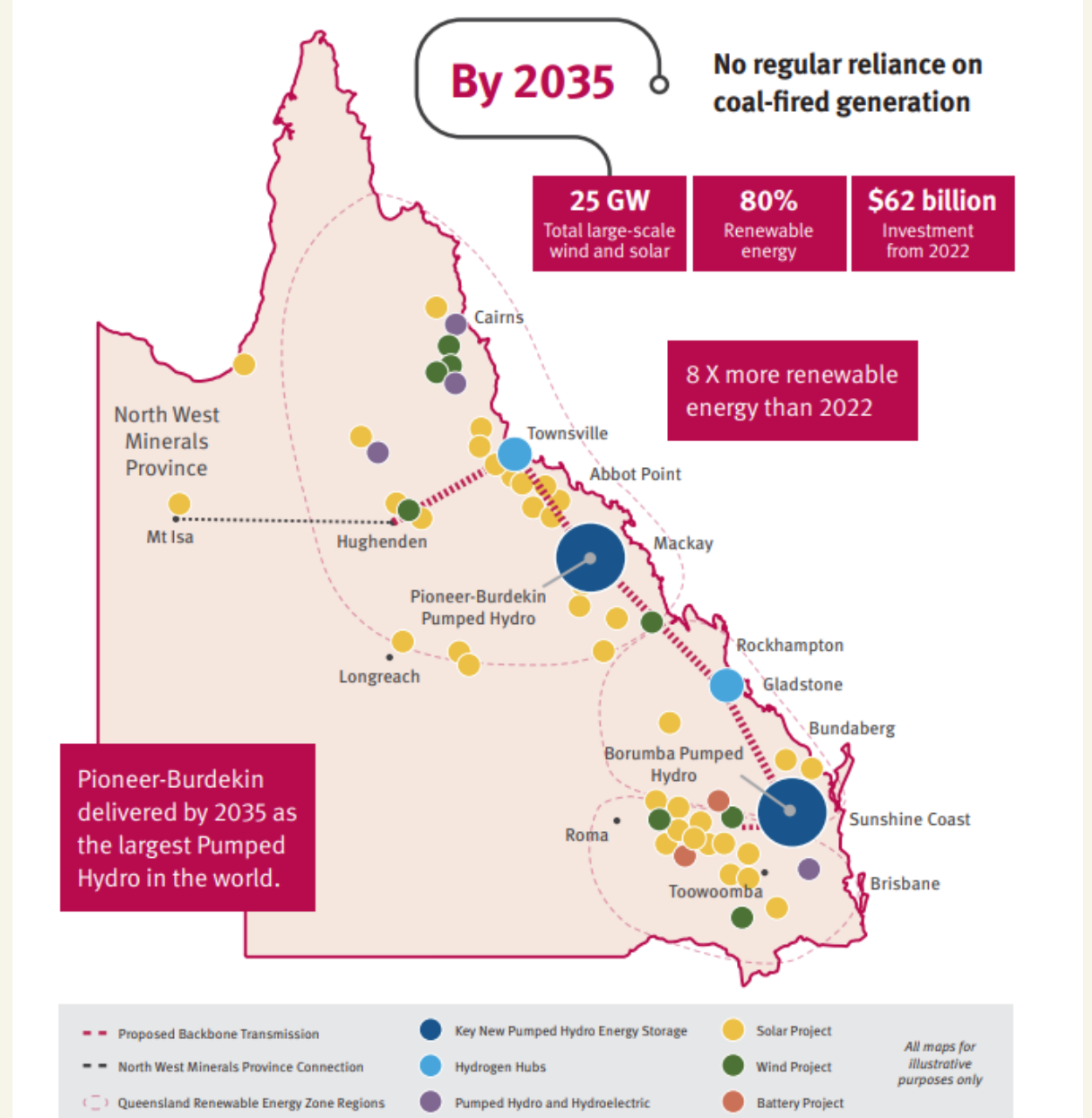
The Queensland Government appointed Powerlink as the REZ Delivery Body on 30 August 2024.

As the REZ Delivery Body, Powerlink will carry out new roles during the REZ declaration process.



Queensland Energy and Jobs Plan

September 2022



SuperGrid Infrastructure Blueprint (updated)




Queensland Renewable Energy Zones

Powerlink and the Queensland Government have identified **12 potential REZs** across the Southern, Central, North and Far north Queensland regions.

The indicative location, size and timing of these REZs is based on several factors including renewable energy companies' interest, analysis of available network capacity, renewable resources and land uses (including environmental considerations).

MAP KEY

-  Potential North and Far North Queensland Renewable Energy Zones
-  Potential Central Queensland Renewable Energy Zones
-  Potential Southern Queensland Renewable Energy Zones
-  Existing transmission lines

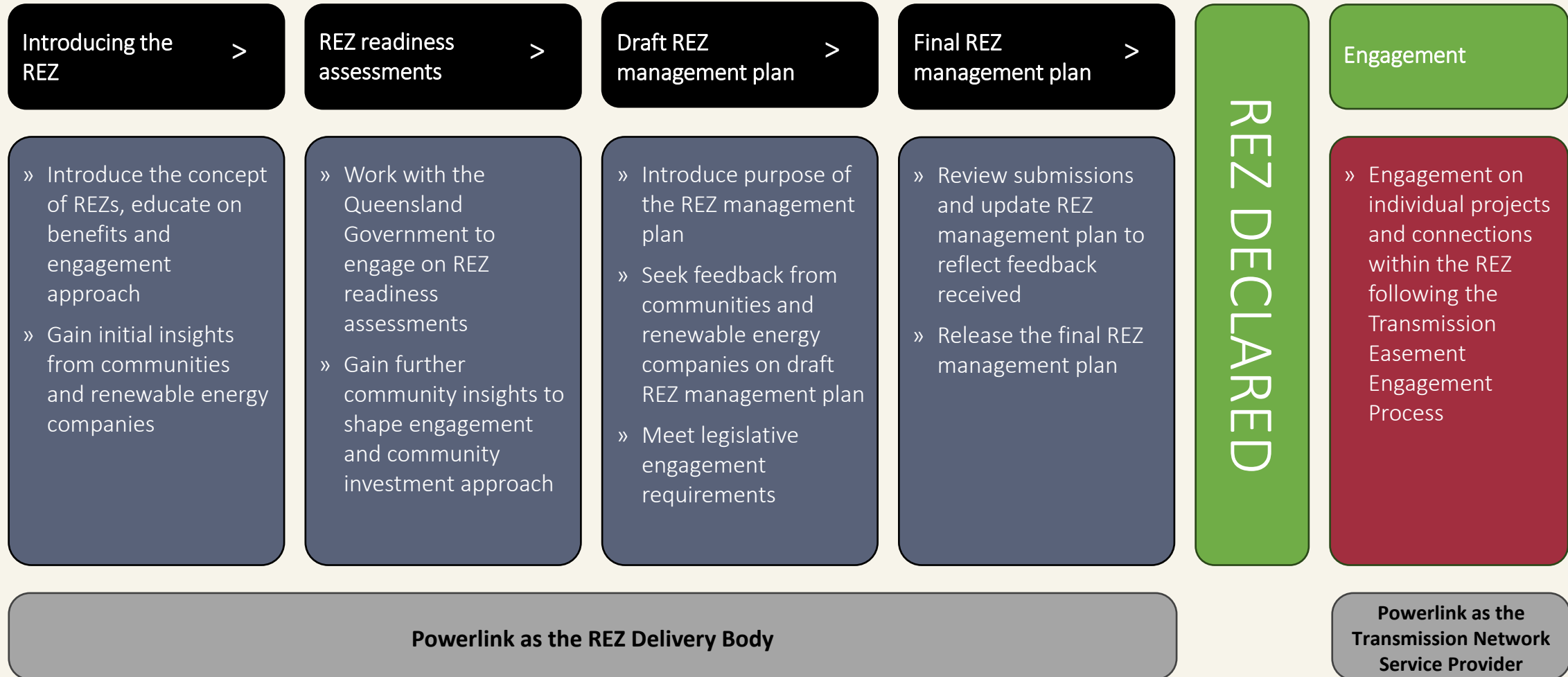




REZ declaration process



Powerlink's REZ engagement process



REZ readiness assessments

REZ readiness assessments

- » Powerlink has worked with the Queensland Government and Office of the Coordinator-General to engage on REZ readiness assessments
- » Central REZ readiness assessments now complete
- » Northern and Southern REZ readiness assessments due late 2024-early 2025



Key REZ documents

REZ readiness assessments

- » Identify and understand potential impacts and opportunities of a REZ declaration
- » Identify appropriate measures to mitigate the impacts
- » Focus government and industry investment through coordination of developments and resources
- » Establish a transparent process the community and the industry can trust

REZ management plan

- » Statutory document
- » Includes technical elements:
 - Transmission infrastructure
 - Geographic boundary
 - Generation capacity
 - Mix of renewable generation
- » Eligibility process for renewable energy companies

'Getting Involved in the Callide REZ' document and 'Developer Guide'

- » Companion documents to the REZ management plan
- » 'Getting Involved' document will explain the REZ declaration process in a simplified way and highlight aspects we are seeking stakeholder feedback on
- » The Developer Guide will focus on information for renewable energy companies
- » Released at the same time as the draft REZ management plan



Discussion

How would you prefer to engage with PLQ during the proposed REZ declaration process?

What questions or considerations are top of mind? What insights do you have?

www.powerlink.com.au/rez

rez@powerlink.com.au

Community investment

Powerlink's community investment approach

- » Our community investment provides small grants and partnerships aligning with Powerlink's values of supporting sustainable communities and economic development.

REZ coordination and strategic partnerships

- » We will look to work collaboratively with key stakeholders including government and industry to coordinate and leverage community investment opportunities and avoid unnecessary duplication.

Stakeholder and community insights

- » We will continue to work with key stakeholders to understand the needs of community and identify key priorities.

Banana Shire

Mayor update



Break time



Your feedback on the Energy Charter Disclosure Report content

- Thoughts on our maturity assessment – endorse or challenge
- Have we focused on the right areas?
- Is something missing?
- Unnecessary detail?
- What would you like to see next year?



1

We will put customers at the centre of our business and the energy system

- FY22
- FY23
- FY24

Elementary

Emerging

Evolving

Empowering

Exceeding



FY25 target



2

We will improve energy affordability for customers

- FY22
- FY23
- FY24

Elementary Emerging Evolving Empowering Exceeding



3

We will provide energy safely, sustainably and reliably

- FY22
- FY23
- FY24

Elementary

Emerging

Evolving

Empowering

Exceeding



FY25 target



4

We will improve the customer experience

- FY22
- FY23
- FY24

Elementary

Emerging

Evolving

Empowering

Exceeding



FY25 target



5

We will support customers facing vulnerable circumstances

- FY22
- FY23
- FY24

Elementary

Emerging

Evolving

Empowering

Exceeding



FY25 target



Top 3 customer outcomes in FY24



1. Building a safer, better CS Energy – response to the Callide incidents
2. Becoming a trusted partner for large C&I customers
3. Accelerating our multi-year battery strategy

Do you agree?

White space

Your questions and
topics



Next steps

Questions?



